

Mac Terminal Bluetooth Screen Option – Tutorial

By: Peter Xiangle Wang

Step 1: Setup Bluetooth Device

1. Make sure the BAM device is plugged in on the iRobot correctly and the robot is ON
2. Switch screen to MAC and log in
- 3.

Go to **System Preferences**
Select **Bluetooth**

Click “+”

It should look like Figure 1

Optional: Rename your device so you can find it easily in step 2

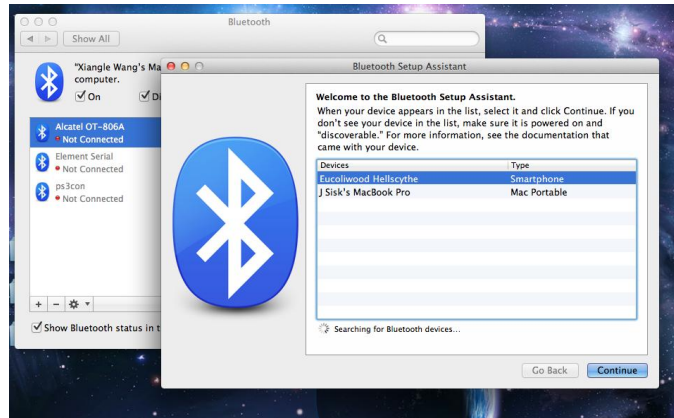


Figure 1

4. Add the device you wish to add (Hint: There is a device address on the BAM can help you to identify the device)

Step 2: Screen Command

1. Open the MAC Terminal
Enter “**cd /dev**” to access you devices
Enter “**ls**” to list all your devices
It should look like Figure 2
2. Enter “**screen tty.(device name) (baud rate)**”

Example:

screen tty.ElementSerial-Ele 57600

3. To exit out of **screen**, press **ctrl + ‘a’ + ‘k’**
Then press **‘y’** for YES

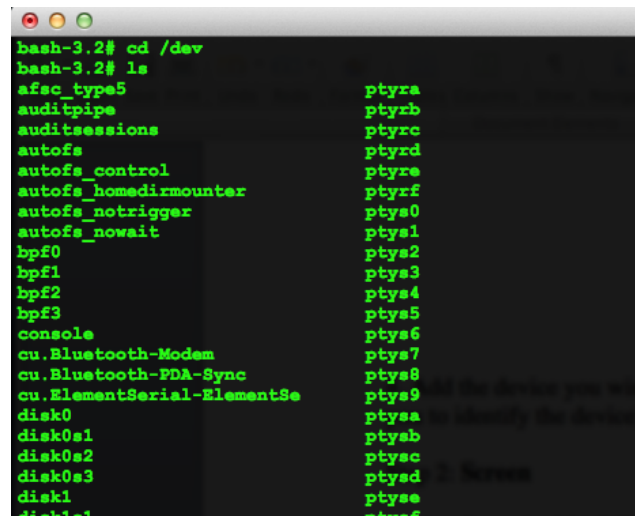


Figure 2

Note: At the command line, hitting TAB is a useful way to have the computer auto-complete a long name like the Bluetooth device name. In the example given, typing “tty.Element” then TAB would have filled in the rest of the name automatically.