

# EE 508

## Lecture 30

### Integrator Design

#### **Current-Mode Integrators**

s-domain to z-domain mappings

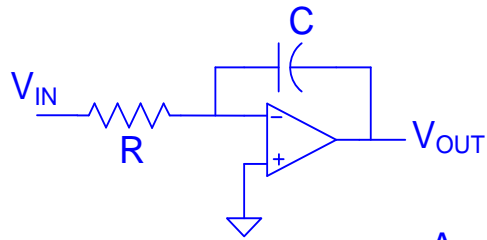
# How can integrator performance be improved?

- Better op amps
- Better Integrator Architectures

# How can the performance of integrator structures be compared?

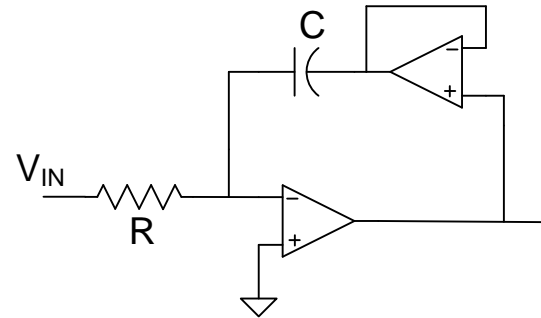
Need metric for comparing integrator performance

# Are there other integrators in the basic classes that have been considered?



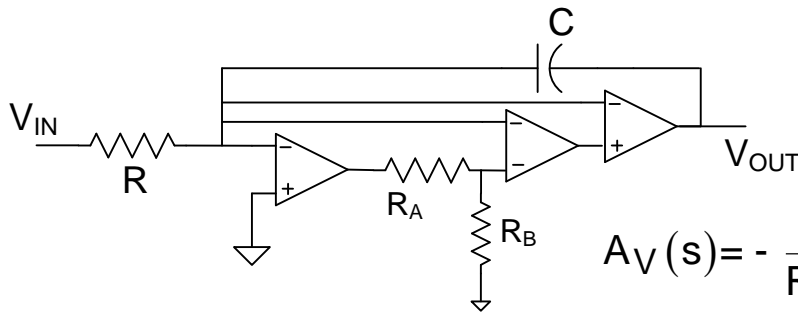
Miller Inverting

$$A_V(s) = -\frac{1}{RCs}$$



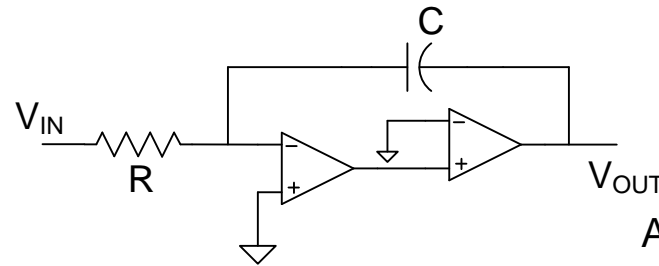
High-Q Inverting

$$A_V(s) = -\frac{1}{RCs}$$



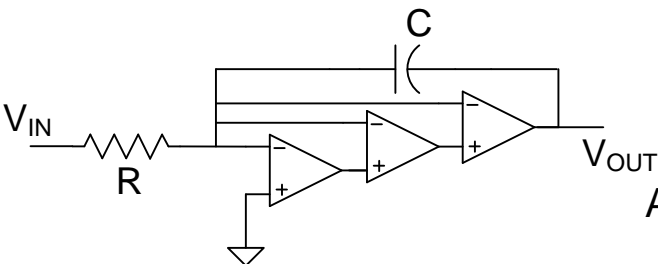
Zero Second Derivative Inverting

$$A_V(s) = -\frac{1}{RCs}$$



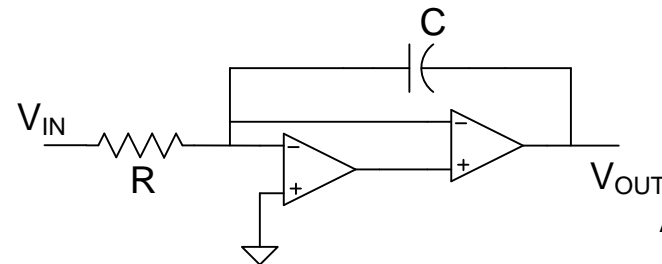
Cascaded Inverting

$$A_V(s) = -\frac{1}{RCs}$$



Zero Second Derivative Inverting

$$A_V(s) = -\frac{1}{RCs}$$



Zero Sensitivity Inverting

$$A_V(s) = -\frac{1}{RCs}$$

# How can the performance of an integrator be characterized and how can integrators be compared?

Express  $A_V(j\omega)$  as

$$A_V(j\omega) = \frac{\pm 1}{R(\omega) + jX(\omega)}$$

where  $R(\omega)$  and  $X(\omega)$  are real and represent the real and imaginary parts of the denominator respectively

$$\text{Phase} = -\tan^{-1} \left( \frac{X(\omega)}{R(\omega)} \right)$$

Ideally  $R(\omega) = 0$

Definition: The Integrator Q factor is the ratio of the imaginary part of the denominator to the real part of the denominator

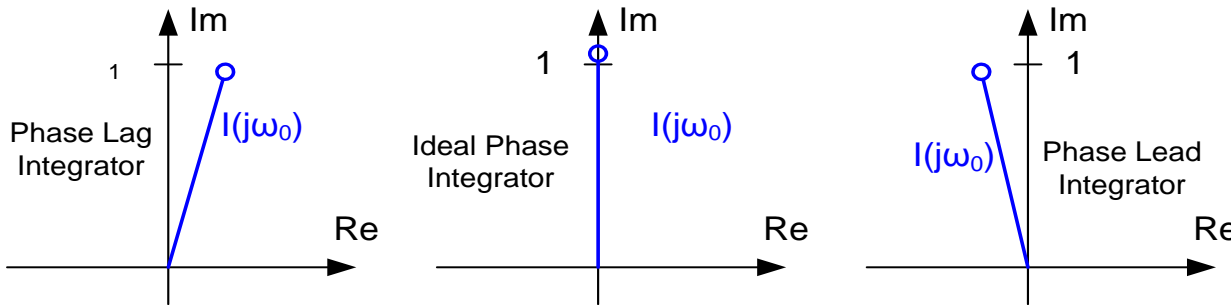
$$Q_{\text{INT}} = \left( \frac{X(\omega)}{R(\omega)} \right)$$

Typically most interested in  $Q_{\text{INT}}$  at the nominal unity gain frequency of the integrator

# How can the performance of an integrator be characterized and how can integrators be compared?

Lead/Lag Characteristics for Inverting Integrators

$$I_V(j\omega) = \frac{-1}{R(\omega) + jX(\omega)}$$

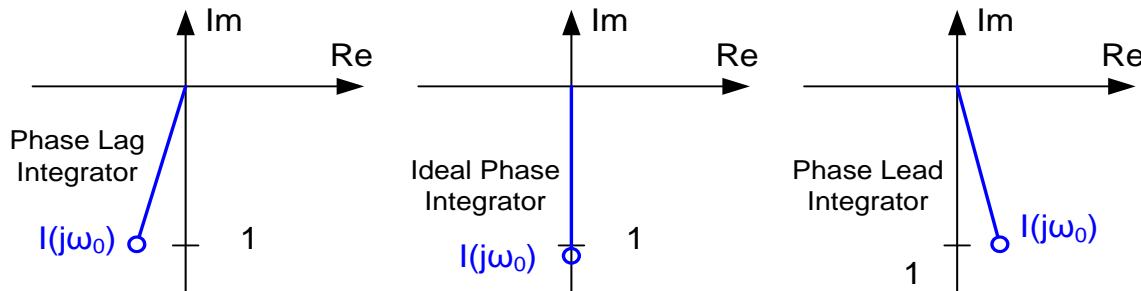


For Phase Lag Integrators,  $R(\omega)$  and  $X(\omega)$  have opposite signs. For Phase Lead integrators,

$R(\omega)$  and  $X(\omega)$  have the same sign. Phase shift ideally  $90^\circ$

Lead/Lag Characteristics for Noninverting Integrators

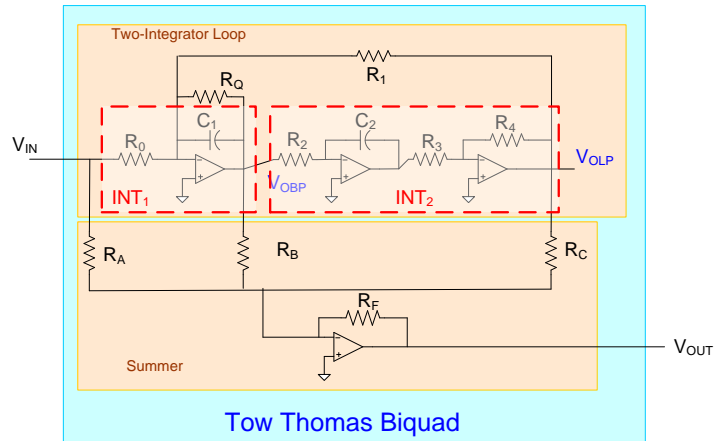
$$I_V(j\omega) = \frac{1}{R(\omega) + jX(\omega)}$$



For Phase Lag Integrators,  $R(\omega)$  and  $X(\omega)$  have opposite signs. For Phase Lead integrators,

$R(\omega)$  and  $X(\omega)$  have the same sign. Phase shift ideally  $270^\circ$

# Is the integrator Q factors simply a metric or does it have some other significance?



It can be shown that the pole Q for the TT Biquad can be approximated by

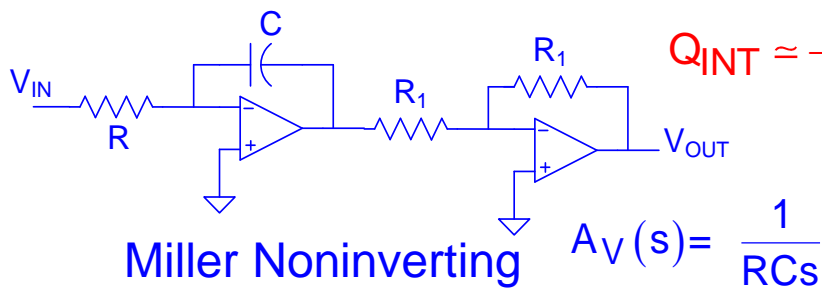
$$Q_P \cong \frac{1}{\frac{1}{Q_{PN}} + \frac{1}{Q_{INT1}(\omega_0)} + \frac{1}{Q_{INT2}(\omega_0)}}$$

Similar expressions for other second-order biquads

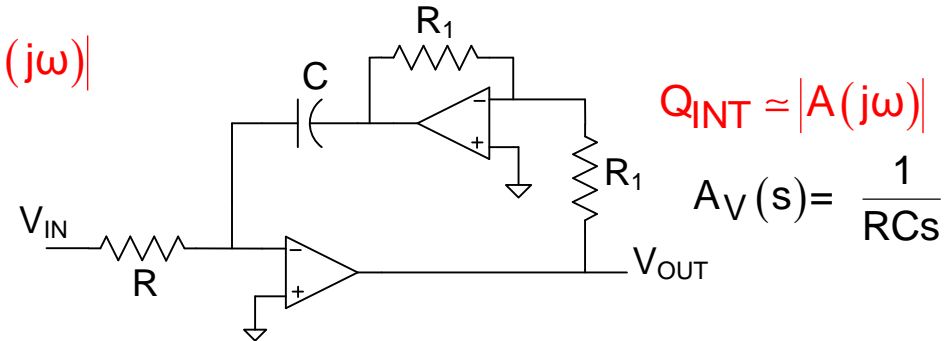
Observe that the integrator Q factors adversely affect the pole Q of the filter

Observe that if  $Q_{INT1}$  and  $Q_{INT2}$  are of opposite signs and equal magnitudes, nonideal effects of integrator can cancel

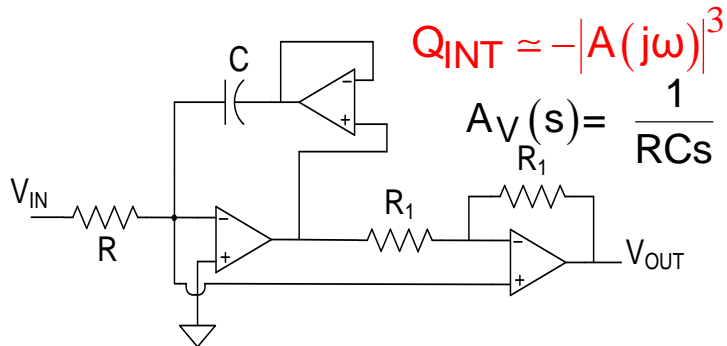
# What are the integrator Q factors for other integrators that have been considered?



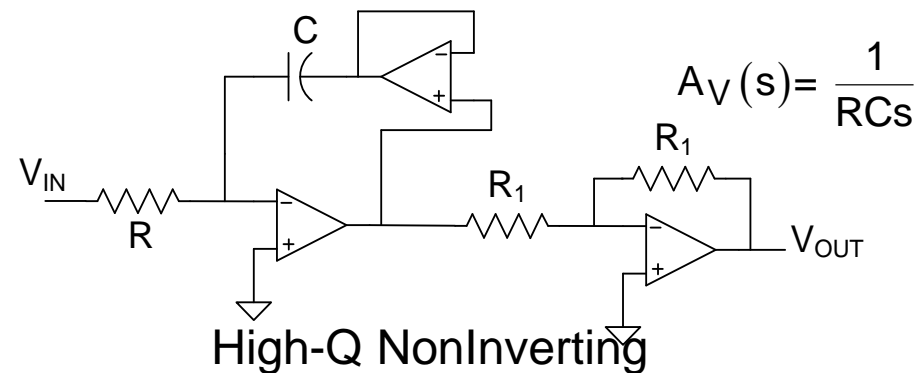
$$Q_{INT} \approx -\frac{1}{3}|A(j\omega)|$$



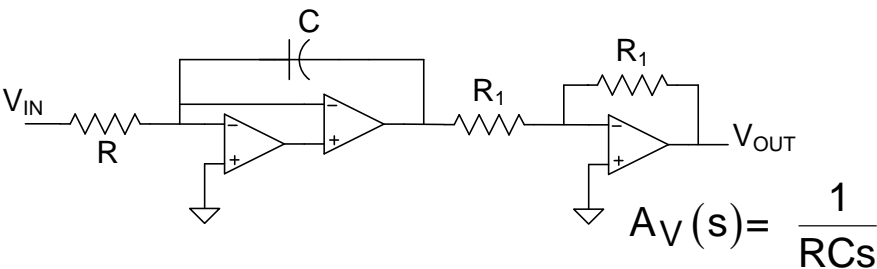
$$Q_{INT} \approx |A(j\omega)|$$



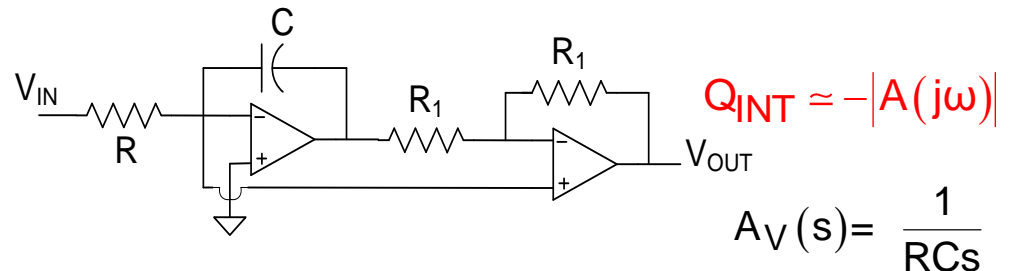
$$Q_{INT} \approx -|A(j\omega)|^3$$



$$A_V(s) = \frac{1}{RCs}$$



$$A_V(s) = \frac{1}{RCs}$$

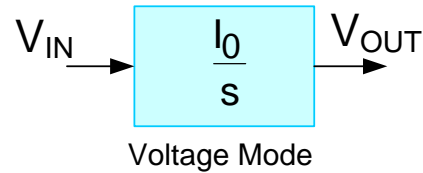


$$Q_{INT} \approx -|A(j\omega)|$$

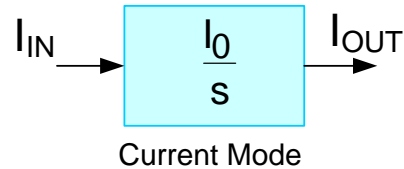
$$A_V(s) = \frac{1}{RCs}$$

Modified Miller Noninverting

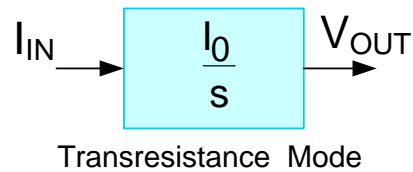
# Integrator Types



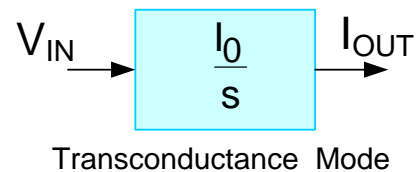
$$V_{OUT} = \frac{I_0}{s} V_{IN}$$



$$I_{OUT} = \frac{I_0}{s} I_{IN}$$



$$V_{OUT} = \frac{I_0}{s} I_{IN}$$

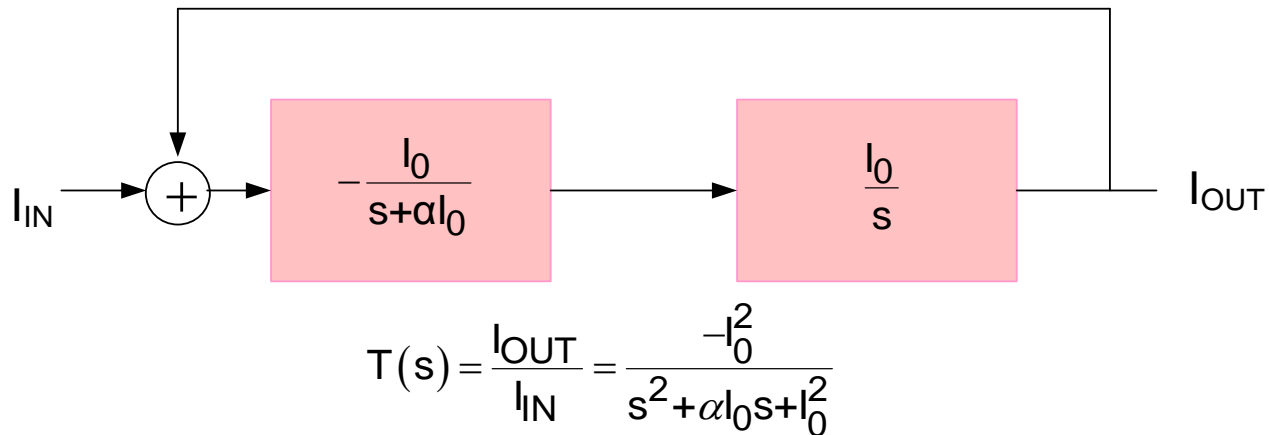


$$I_{OUT} = \frac{I_0}{s} V_{IN}$$

**Selected Current Mode, Transresistance Mode, and Transconductance Mode Integrators**



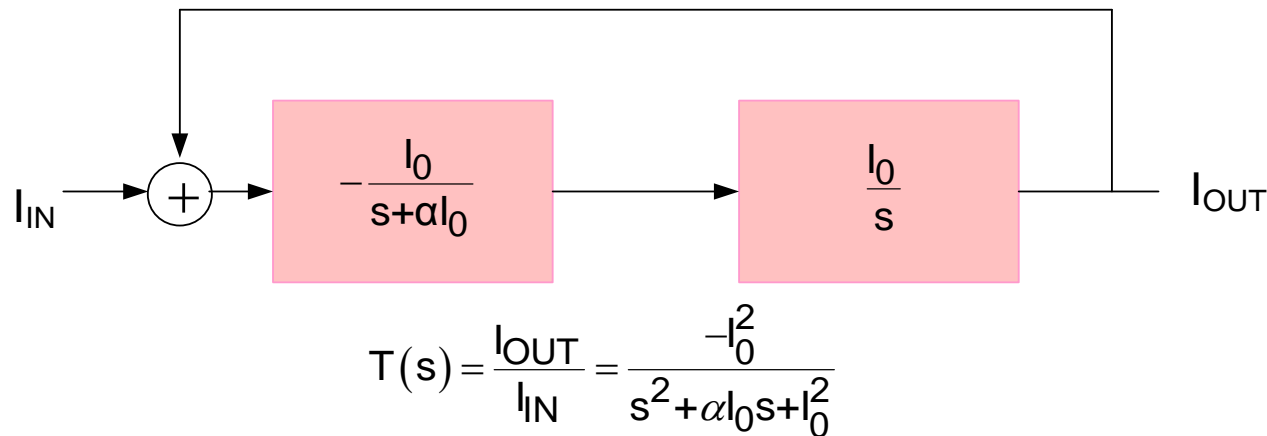
# Current-Mode Filters



## Basic Concepts of Benefits of Current-Mode Filters:

- Large voltage swings difficult to maintain in integrated processes because of linearity concerns
- Large voltage swings slow a circuit down because of time required to charge capacitors
- Voltage swings can be very small when currents change
- Current swings are not inherently limited in integrated circuits (only voltage swings)
- With low voltage swings, current-mode circuits should dissipate little power

# Current-Mode Filters



Concept of Current-Mode Filters is Somewhat Recent:

Key paper that generated interest in current-mode filters (ISCAS 1989):

[Switched currents-a new technique for analog sampled-data signal processing](#)

JB Hughes, NC Bird... - Circuits and Systems, 1989 ... , 2002 - [ieeexplore.ieee.org](http://ieeexplore.ieee.org)

INTRODUCTION The enormous complexity available in state-of-the-art CMOS processing has made possible the integration of complete systems, including both digital and analog signal processing functions, within the same chip Through the last decade, the **switched** capacitor technique ...

[Cited by 151 - Related articles](#)

This paper is one of the most significant contributions that has ever come from ISCAS

# Current-Mode Filters

BROWSE ▾

MY SETTINGS ▾

CART

SIGN OUT

Terms of Use | Feedback

? Help

## Advanced Search Options

Advanced Keyword/Phrases

Publication Quick Search

CrossRef

Scitopia.org

Preferences

? Page Help

### Advanced Search

Switch to Command Search

Enter keywords or phrases, select fields, and select operators

*Note: Refresh page to reflect updated preferences.*

Search :  Metadata Only  Full Text & Metadata ?

Current-Mode in Metadata Only

AND Filters in Metadata Only

AND in Metadata Only

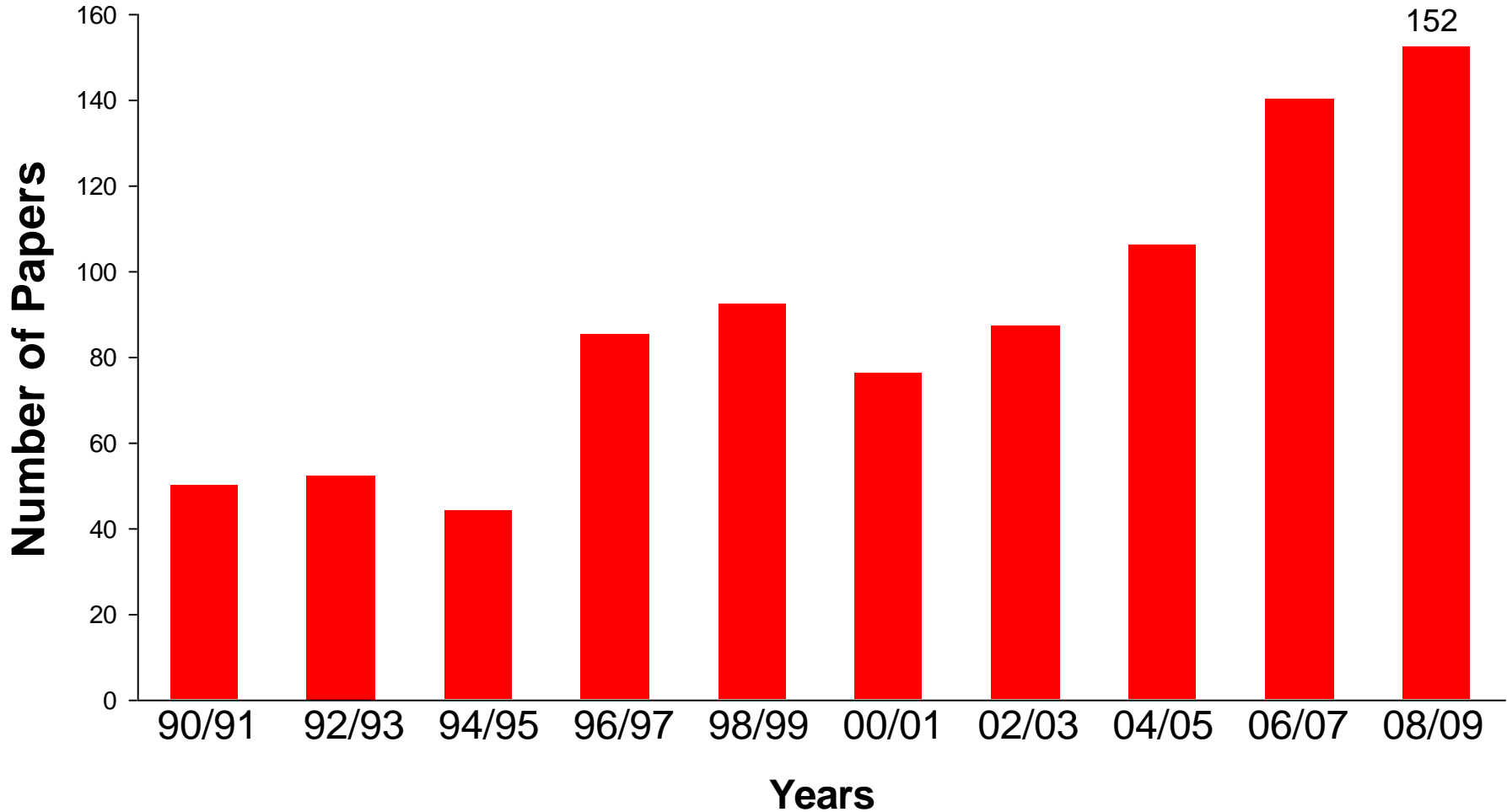
+ Add New Line

Reset All

SEARCH

# Current-Mode Filters

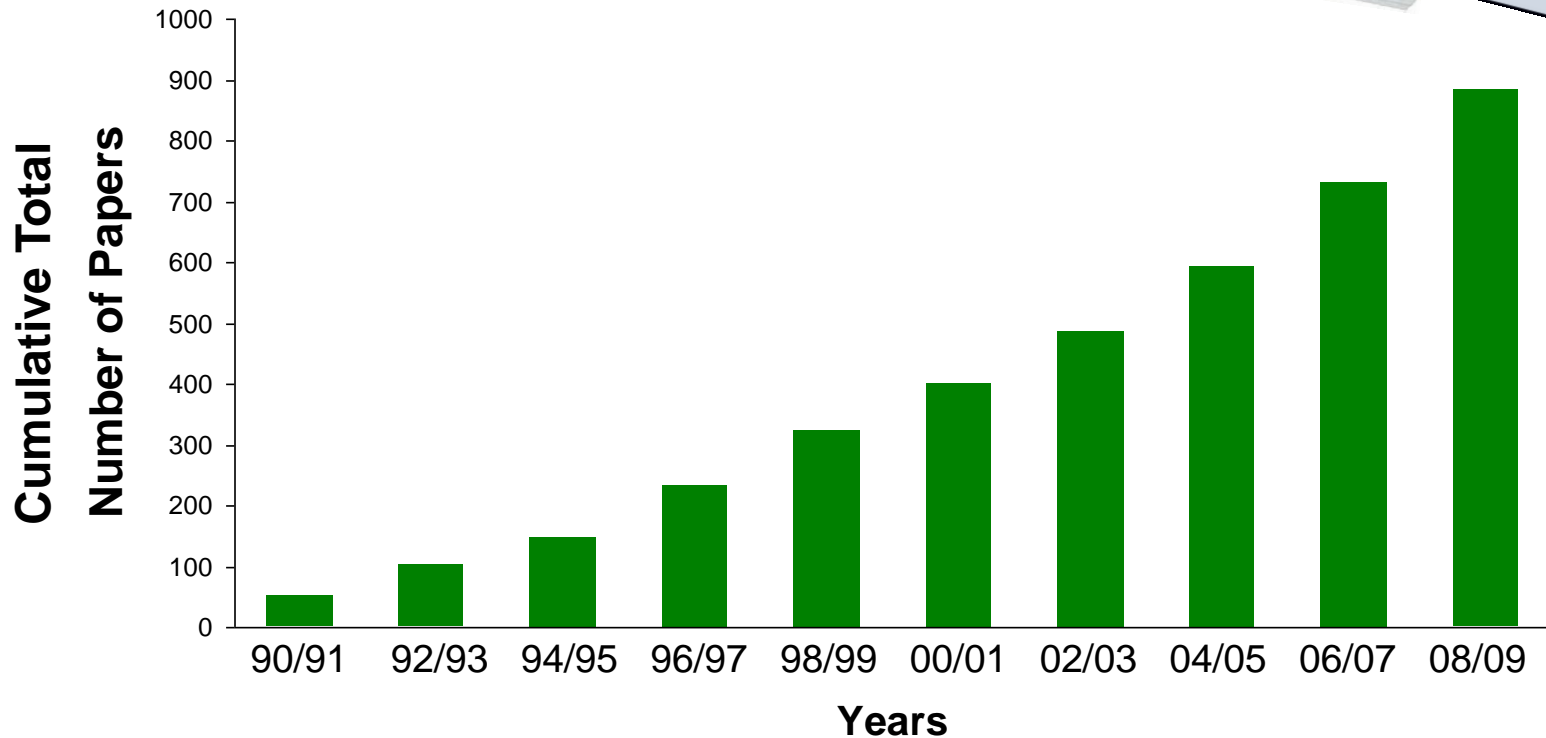
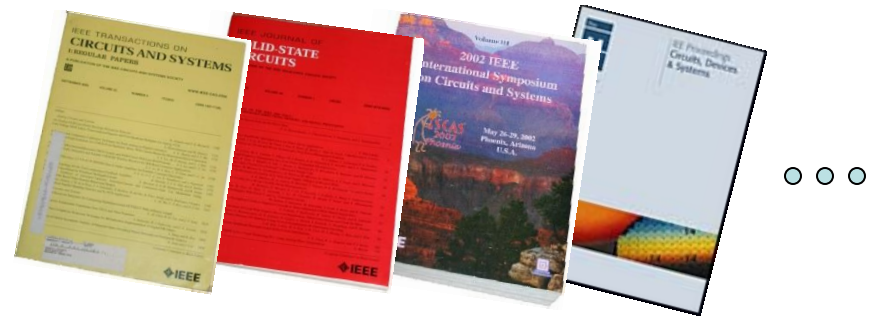
Advanced Search for “current-mode” and “filters”



1872-1989 – total of 19 references

Search done on Nov 7, 2010

# Current-Mode Filters



Steady growth in research in the area since 1990 and publication rate is growing with time !!

# Current-Mode Filters

## The Conventional Wisdom:



Proc. IEE Dec 2006:

### 1 Introduction

Current-mode circuits have been proven to offer advantages over their voltage-mode counterparts [1, 2]. They possess wider bandwidth, greater linearity and wider dynamic range. Since the dynamic range of the analogue circuits using low-voltage power supplies will be low, this problem can be solved by employing current-mode operation.

Fully differential current-mode third-order Butterworth VHF  $G_{m-C}$  filter in 0.18  $\mu\text{m}$  CMOS

Download Citation Email Print

Hwang, Y.-S.; Chen, J.-J.; Lai, J.-H.; Sheu, P.-W.; Dept. of Electron. Eng., Nat. Taipei Univ. of Technol., Taiwan

This paper appears in: Circuits, Devices and Systems, IEE Proceedings  
Issue Date: Dec. 2006  
Volume: 153 Issue:6  
On page(s): 552 - 558

Proc. SICE-ICASE, Oct. 2006

### 1. INTRODUCTION

It is well known that current-mode circuits have been receiving significant attention owing to its advantage over the voltage-mode counterpart, particularly for higher frequency of operation and simpler filtering structure [1].

Current-controlled Current-mode Biquadratic Filter with two inputs and three outputs Using Multiple-Output FTFNs

Download Citation Email Print Rights and Permissions

Hirunporm, J.; Pukkalanun, T.; Tangsrirat, W.; Fac. of Eng., King Mongkut's Inst. of Technol., Bangkok

This paper appears in: SICE-ICASE, 2006. International Joint Conference  
Issue Date: 18-21 Oct. 2006  
On page(s): 5691 - 5694



# Current-Mode Filters

## The Conventional Wisdom:



JSC April 1998:

“... current-mode functions exhibit higher frequency potential, simpler architectures, and lower supply voltage capabilities than their voltage-mode counterparts.”



CAS June 1992

“Current-mode signal processing is a very attractive approach due to the simplicity in implementing operations such as ... and the potential to operate at higher signal bandwidths than their voltage mode analogues” ... “Some voltage-mode filter architectures using transconductance amplifiers and capacitors (TAC) have the drawback that ...”

High-frequency high-Q BiCMOS current-mode bandpass filter and mobile communication application

Download Citation Email Print Rights and Permissions

Fabre, A.; Saaid, O.; Wiest, F.; Boucheron, C.; Lab. d'Electron., Ecole Centrale de Paris, Chatenay-Malabry

This paper appears in: Solid-State Circuits, IEEE Journal of  
Issue Date: Apr 1998  
Volume: 33 Issue:4  
On page(s): 614 - 625

Current-mode continuous-time filters: two design approaches

Download Citation Email Print Rights and Permissions

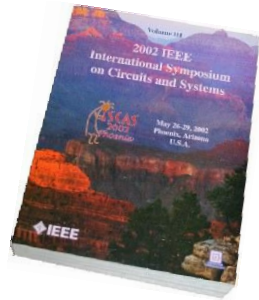
Ramirez-Angulo, J.; Robinson, M.; Sanchez-Sinecio, E.; Dept. of Electr. & Comput. Eng., New Mexico State Univ., Las Cruces, NM

This paper appears in: Circuits and Systems II: Analog and Digital Signal Processing, IEEE Transactions on  
Issue Date: Jun 1992  
Volume: 39, Issue:6  
On page(s): 337 - 341

# Current-Mode Filters

## The Conventional Wisdom:

ISCAS 1993:



“In this paper we propose a fully balanced high frequency current-mode integrator for low voltage high frequency filters. Our use of the term current mode comes from the use of current amplifiers as the basic building block for signal processing circuits. This fully differential integrator offers significant improvement even over recently introduced circuit with respect to accuracy, high frequency response, linearity and power supply requirements. Furthermore, it is well suited to standard digital based CMOS processes.”

### [3V high-frequency current-mode filters](#)

Smith, S.L.; Sanchez-Sinencio, E.;

[Circuits and Systems, 1993., ISCAS '93, 1993 IEEE International Symposium on](#)

Digital Object Identifier: [10.1109/ISCAS.1993.394009](https://doi.org/10.1109/ISCAS.1993.394009)

Publication Year: 1993 , Page(s): 1459 - 1462 vol.2



# Current-Mode Filters

## The Conventional Wisdom:

Two key publications where benefits of the current-mode circuits are often referenced:



[All current-mode frequency selective circuits](#) **GW Roberts, AS Sedra** - Electronics Letters, June 1989 - pp. 759-761 [Cited by 161](#)

“To make greatest use of the available transistor bandwidth  $f_T$ , and operate at low voltage supply levels, it has become apparent that analogue signal processing can greatly benefit from processing current signals rather than voltage signals. Besides this, it is well known by electronic circuit designers that the mathematical operations of adding, subtracting or multiplying signals represented by currents are simpler to perform than when they are represented by voltages. This also means that the resulting circuits are simpler and require less silicon area.”

# Current-Mode Filters

## The Conventional Wisdom:

Two key publications where benefits of the current-mode circuits are often referenced:



[Recent developments in current conveyors and current-mode circuits](#) **B Wilson** - Circuits, Devices and Systems, IEE Proceedings G, pp. 63-77, Apr. 1990 [Cited by 203](#)

“The **use** of current rather than voltage as the active parameter can result in higher usable gain, accuracy and bandwidth due to reduced voltage excursion at sensitive nodes. A current-mode approach is not just restricted to current processing, but also offers certain important advantages when interfaced to voltage-mode circuits.”

# Current-Mode Filters

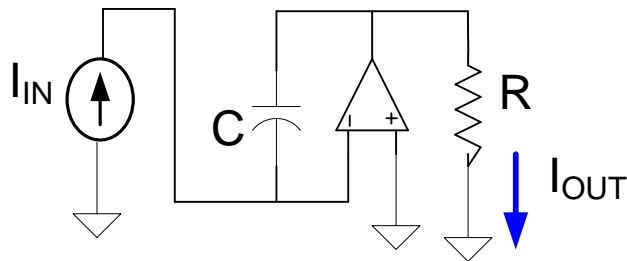
## The Conventional Wisdom:

- Current-Mode circuits operate at higher-frequencies than voltage-mode counterparts
- Current-Mode circuits operate at lower supply voltages and lower power levels than voltage-mode counterparts
- Current-Mode circuits are simpler than voltage-mode counterparts
- Current-Mode circuits offer better linearity than voltage-mode counterparts

This represents four really significant benefits of current-mode circuits!

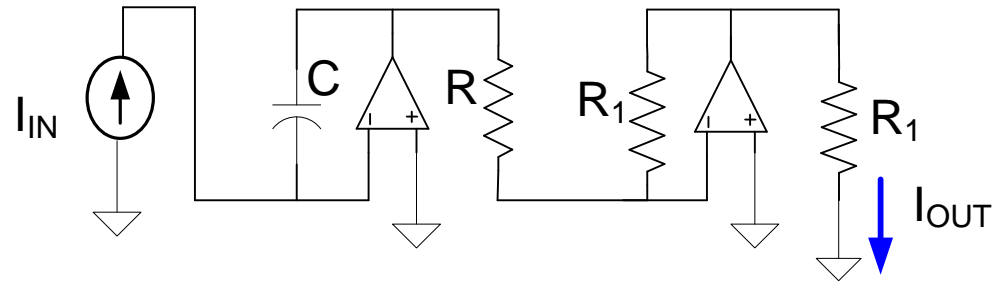
# Some Current-Mode Integrators

Active RC



$$I_{OUT} = \left( \frac{-1}{RCs} \right) I_{IN}$$

Inverting



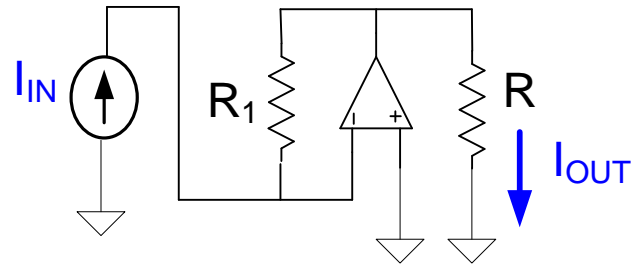
$$I_{OUT} = \left( \frac{1}{RCs} \right) I_{IN}$$

Noninverting

- Summing inputs really easy to obtain
- Loss is easy to add
- Same component count as voltage-mode integrators
- Some argue that since only interested in currents, can operate at lower voltages

# Some Current-Mode Integrators

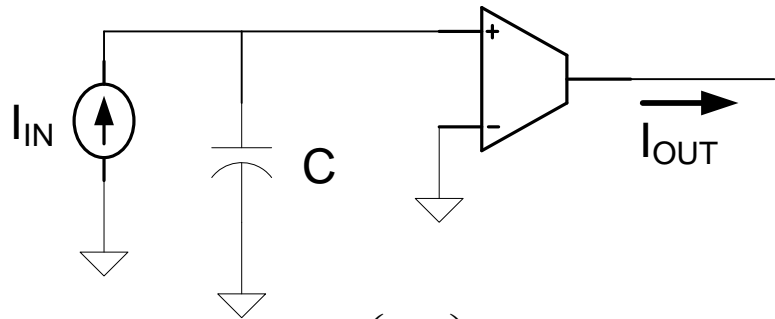
Current-Mode Inverting Amplifier



$$I_{OUT} = \left( -\frac{R_1}{R} \right) I_{IN}$$

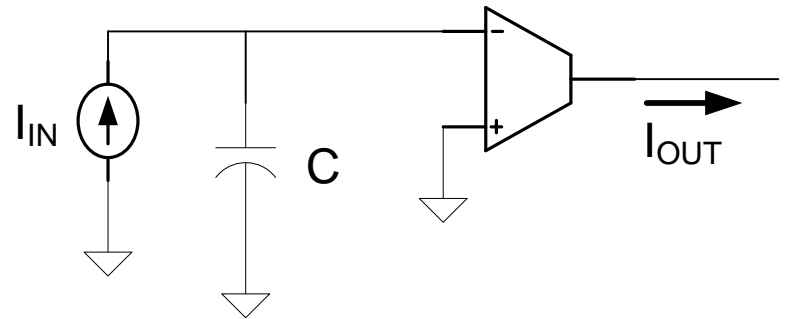
# Some Current-Mode Integrators

OTA-C



$$I_{OUT} = \left( \frac{g_m}{C_s} \right) I_{IN}$$

Noninverting

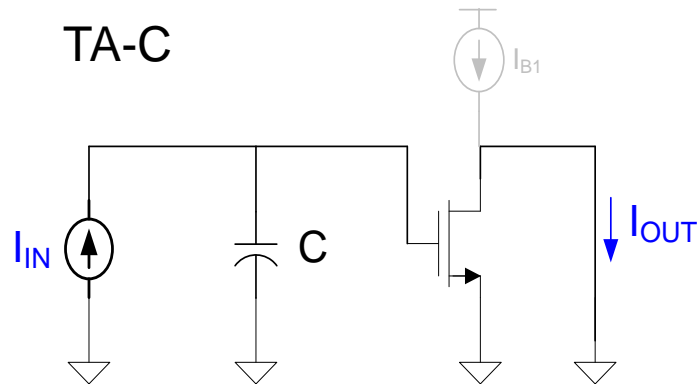


$$I_{OUT} = \left( \frac{-g_m}{C_s} \right) I_{IN}$$

Inverting

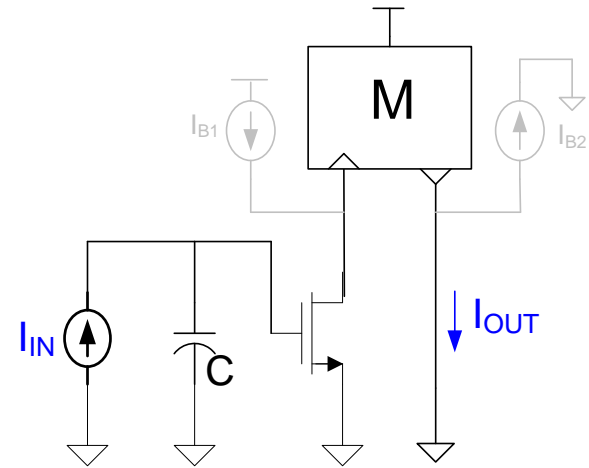
- Summing inputs really easy to obtain
- Loss is easy to add
- Same component count as voltage-mode integrators
- Many argue that since only interested in currents, can operate at lower voltages and higher frequencies

# Some Current-Mode Integrators



$$I_{OUT} = \left( \frac{-g_m}{C_s} \right) I_{IN}$$

Inverting



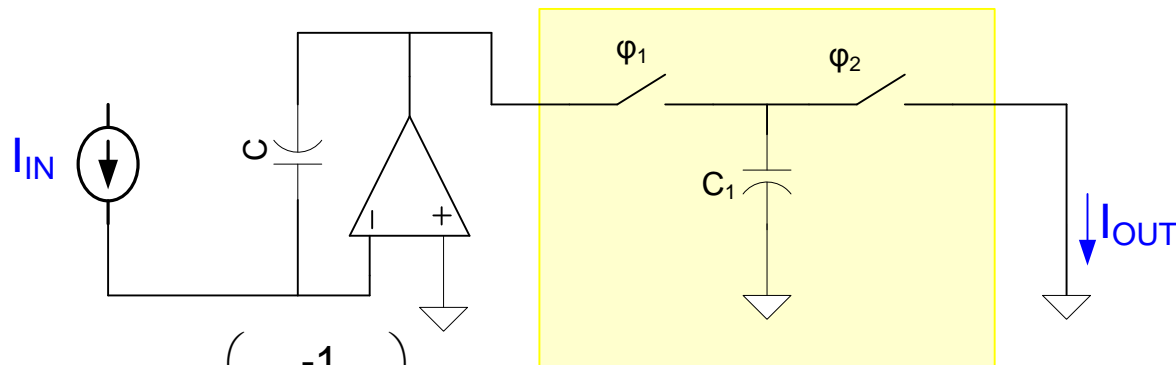
$$I_{OUT} = \left( \frac{g_m}{C_s} \right) I_{IN}$$

Noninverting

- Summing inputs really easy to obtain
- Loss is easy to add
- Same component count as voltage-mode integrators
- Many argue that since only interested in currents, can operate at lower voltages and higher frequencies

# Some Current-Mode Integrators

Switched-C



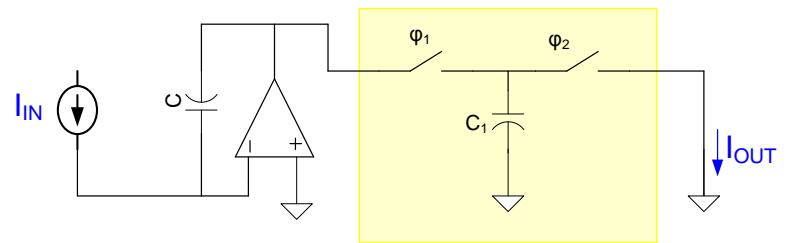
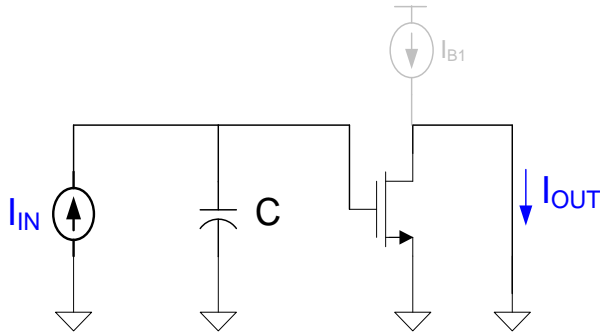
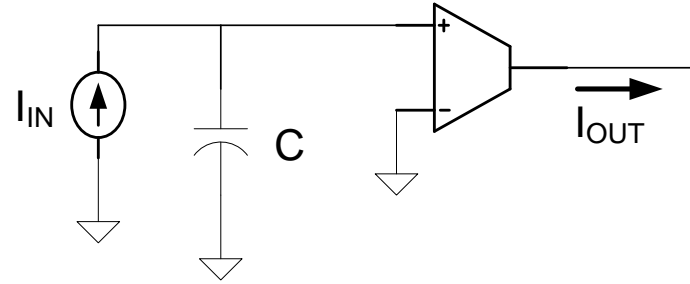
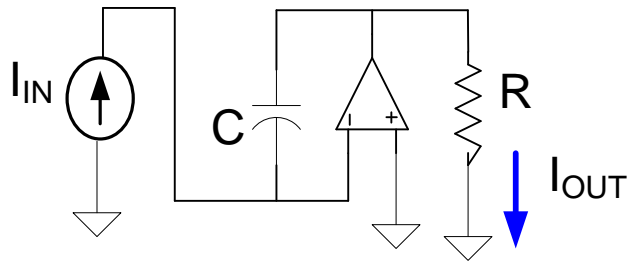
$$I_{OUT} = \left( \frac{-1}{R_{EQ} C_s} \right) I_{IN}$$

Inverting

- Noninverting input easy to obtain
- Summing inputs really easy to obtain
- Loss is easy to add
- Stray insensitive structures readily available
- Less component count than voltage-mode integrators because summing input requires no additional inputs
- SC current-mode integrators have not received much attention in the literature (likely because few have observed the equivalence noted above)



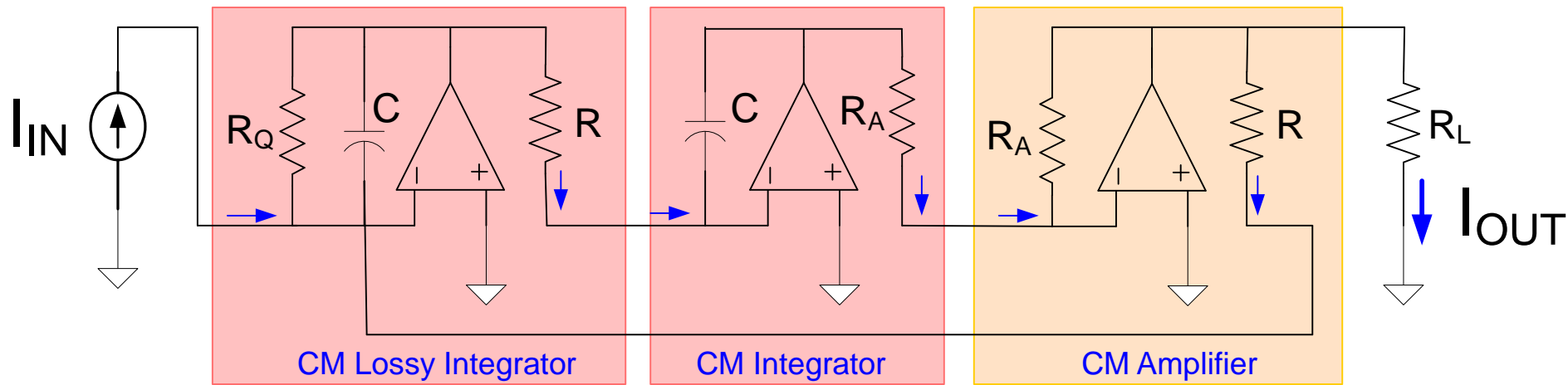
# Current-Mode Integrators



The other basic types of voltage-mode integrators also have current-mode counterparts

- Switched-resistor
- MOSFET-C
- “Other”

# Current-Mode Two Integrator Loop

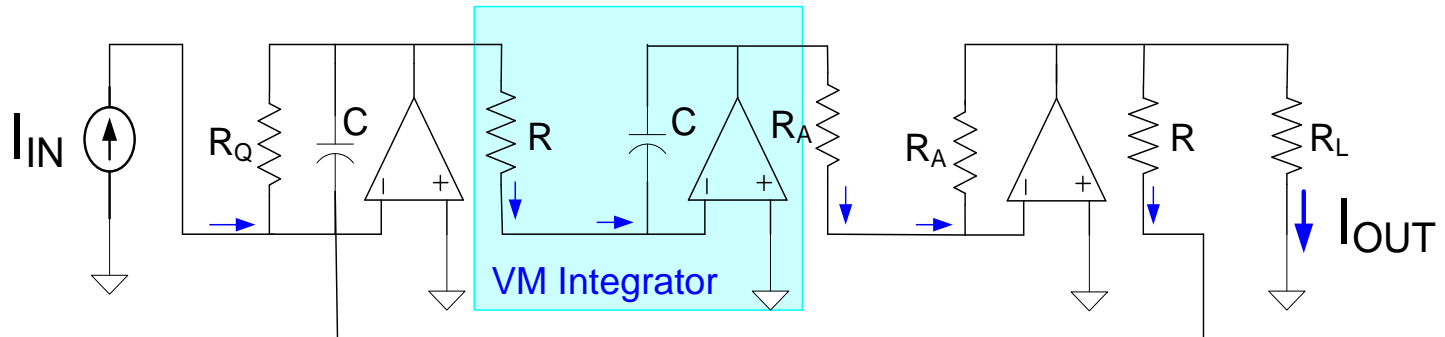
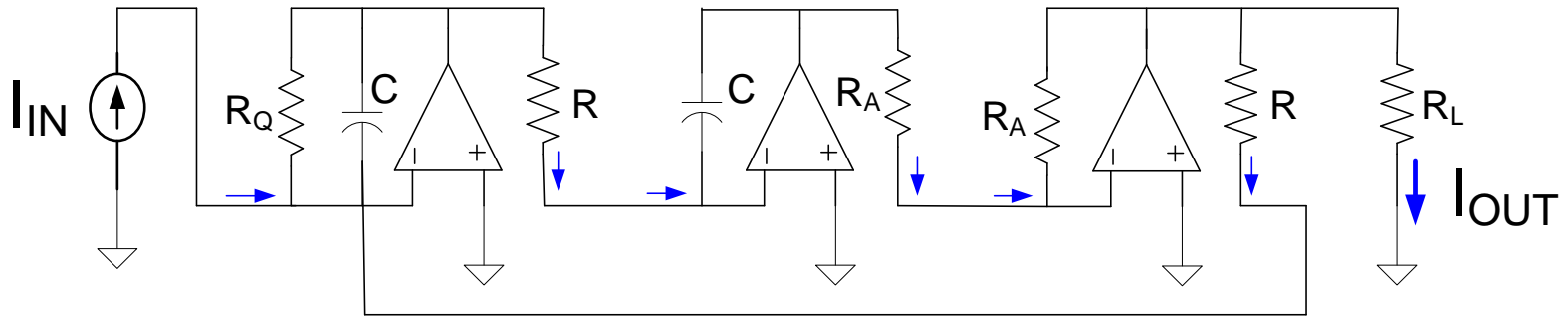
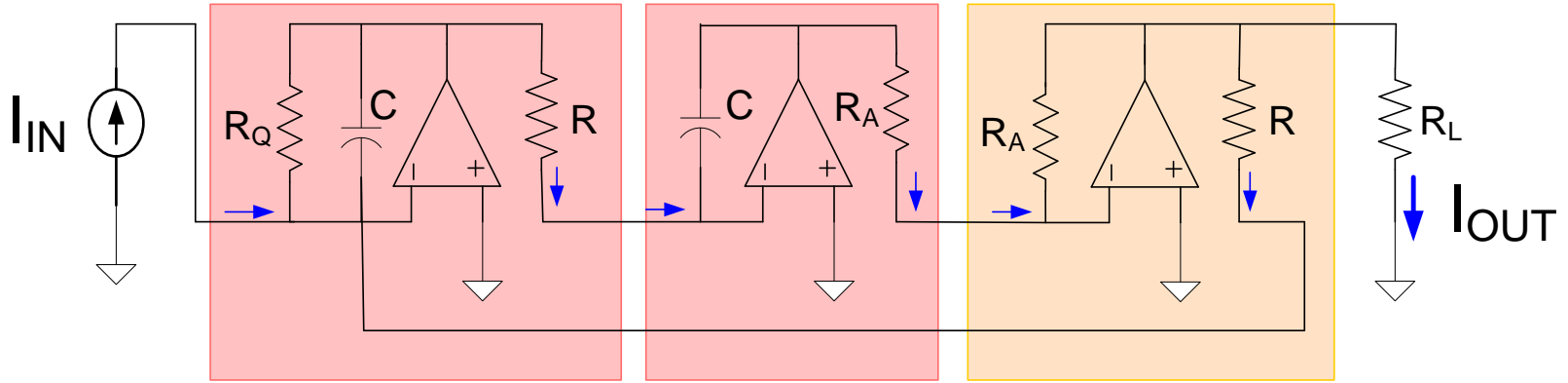


- Straightforward implementation of the two-integrator loop
- Simple structure

# Current-Mode Two Integrator Loop

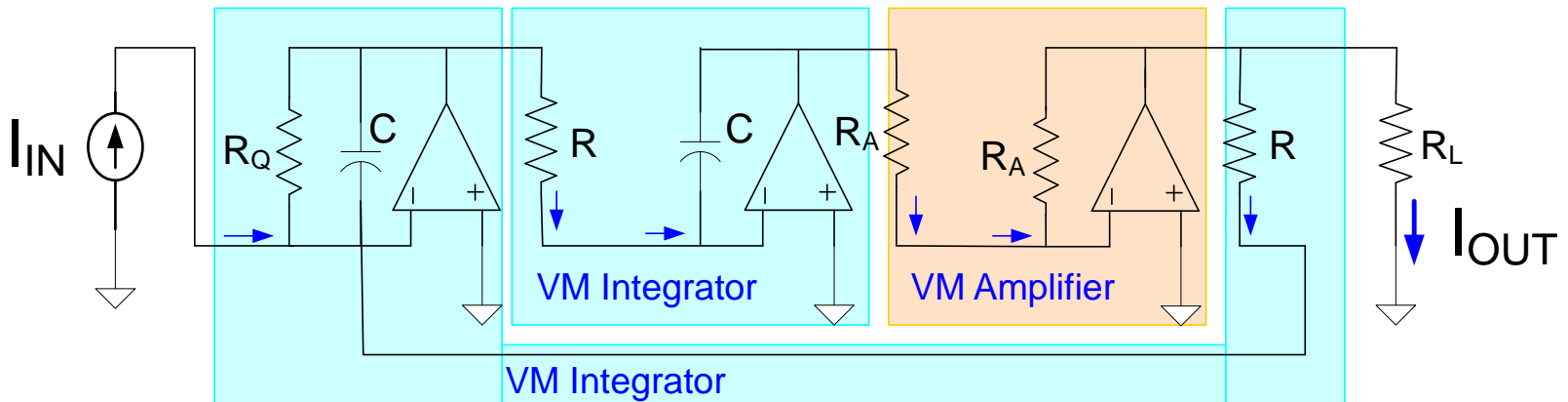
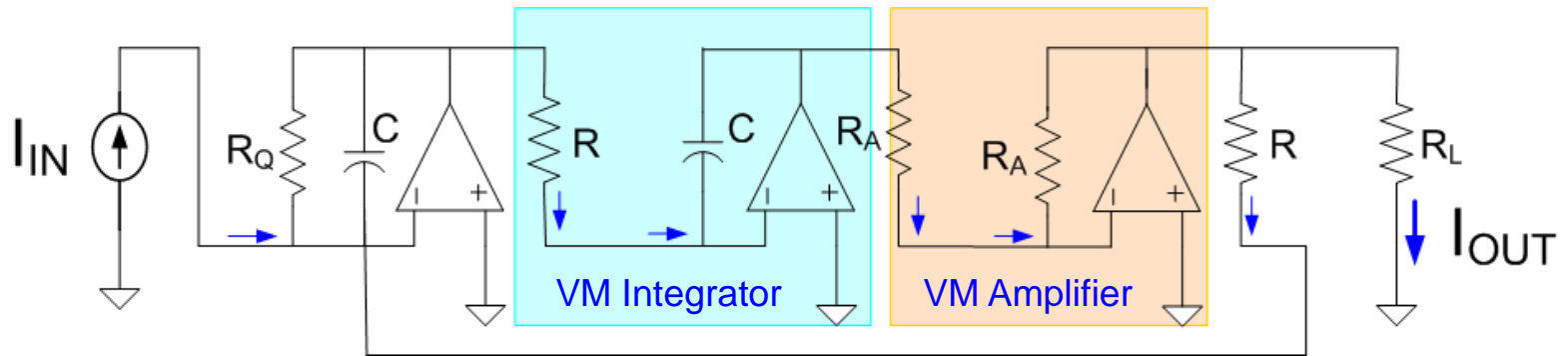
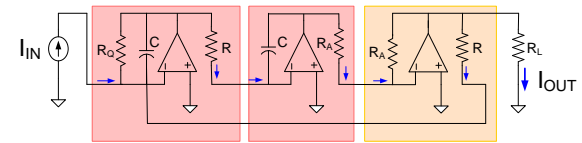
An Observation:

## Loop



# Current-Mode Two Integrator Loop

An Observation:



This circuit is identical to another one with two voltage-mode integrators and a voltage-mode amplifier !

# Observation

- Many papers have appeared that tout the performance advantages of current-mode circuits
- In all of the current-mode papers that this instructor has seen, no attempt is made to provide a quantitative comparison of the key performance features of current-mode circuits with voltage-mode counterparts
- All justifications of the advantages of the current-mode circuits this instructor has seen are based upon qualitative statements

# Observations (cont.)

- It appears easy to get papers published that have the term “current-mode” in the title
- Over 900 papers have been published in IEEE forums alone !
- Some of the “current-mode” filters published perform better than other “voltage-mode” filters that have been published
- We are still waiting for even one author to quantitatively show that current-mode filters offer even one of the claimed four advantages over their voltage-mode counterparts

Will return to a discussion of Current-Mode filters later

# Switched-Current Filters

Basic idea introduced by Hughes and Bird at ISCAS 1989

[Switched currents-a new technique for analog sampled-data signal processing](#)

JB Hughes, NC Bird... - Circuits and Systems, 1989 ... , 2002 - [ieeexplore.ieee.org](http://ieeexplore.ieee.org)

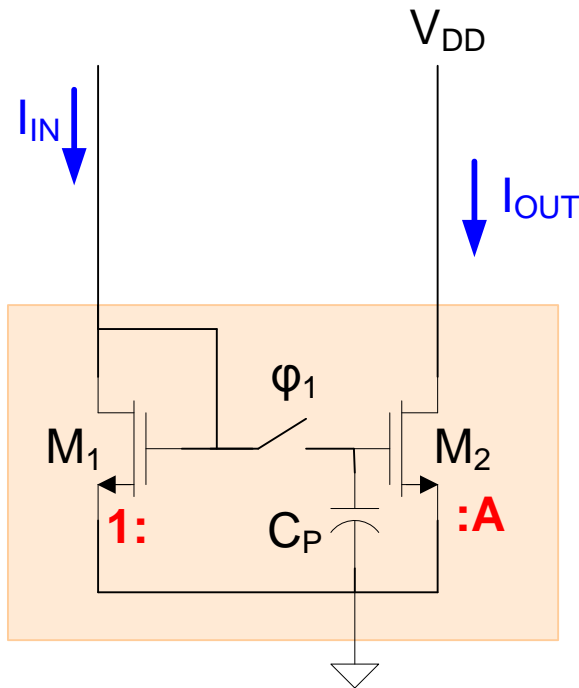
INTRODUCTION The enormous complexity available in state-of-the-art CMOS processing has made possible the integration of complete systems, including both digital and analog signal processing functions, within the same chip Through the last decade, the **switched** capacitor technique ...

[Cited by 151](#) - [Related articles](#)

Technique introduced directly in the z-domain

# Switched-Current Filters

Basic idea introduced by Hughes and Bird at ISCAS 1989



$$I_{OUT} = \begin{cases} AI_{IN}(t) & \text{for } \phi_1 \text{ closed} \\ AI_{IN}(T_{SW}) & \text{for } \phi_1 \text{ open} \end{cases}$$

If  $\Phi_1$  is a periodic signal and if  $I_{IN}$  is also appropriately clocked, the input/output currents of this circuit can be represented with the difference equation

$$I_{OUT}(nT) = AI_{IN}(nT-T)$$

This switched mirror becomes a delay element

“Gain”  $A$  is that of a current mirror

$A$  can be accurately controlled

Circuit is small and very fast

Concept can be extended to implement arbitrary difference equation

Difference equation characterizes filter  $H(z)$

Need only current mirrors and switches

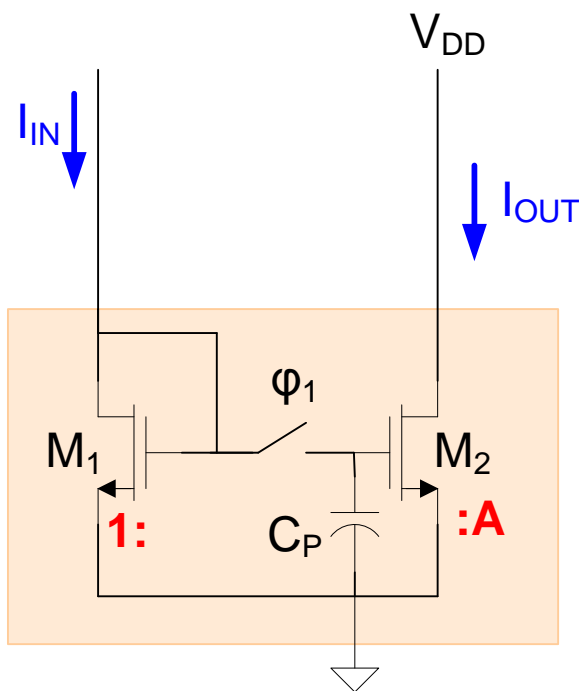
Truly a “current-mode” circuit



# Switched-Current Filters

Basic idea introduced by Hughes and Bird at ISCAS 1989

$$I_{OUT}(nT) = A I_{IN}(nT-T)$$



$C_p$  is parasitic gate capacitance on  $M_2$

Very low power dissipation

Potential to operate at very low voltages

Potential for accuracy of a SC circuit at both low and high frequencies but without the Op Amp and large C ratios

Neither capacitor or resistor values needed to do filtering!

A completely new approach to designing filters that offers potential for overcoming most of the problems plaguing filter designers for decades !

Before developing Switch-Current concept, need to review background information in s to z domain transformations

